

Four Years of Gates

House Asgard's Pennsic Legacy

Among those who have built large-scale portable gates, Duke Syr Baldar of Trimaric and the House Asgard deserve credit for really getting the "movement" started.

They may have been the first to question the architectural value of plywood towers, the first to construct elaborate gateways as symbols of royal power. These pages show several of the projects House Asgard has brought to Pennsic during the past five years.

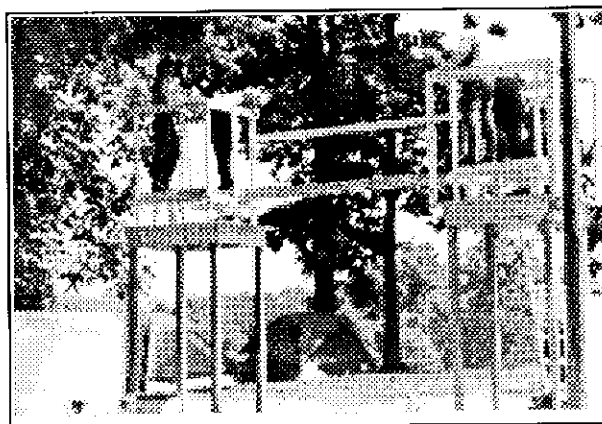


The two towers at night. Built and designed by Duke Syr Baldar, House Asgard and Baron Master Geoffrey, Pennsic XVII?



Above: The first of the great "illuminated" towers. Baron Master Geoffrey did the panel paintings, and House Asgard erected the edifice.

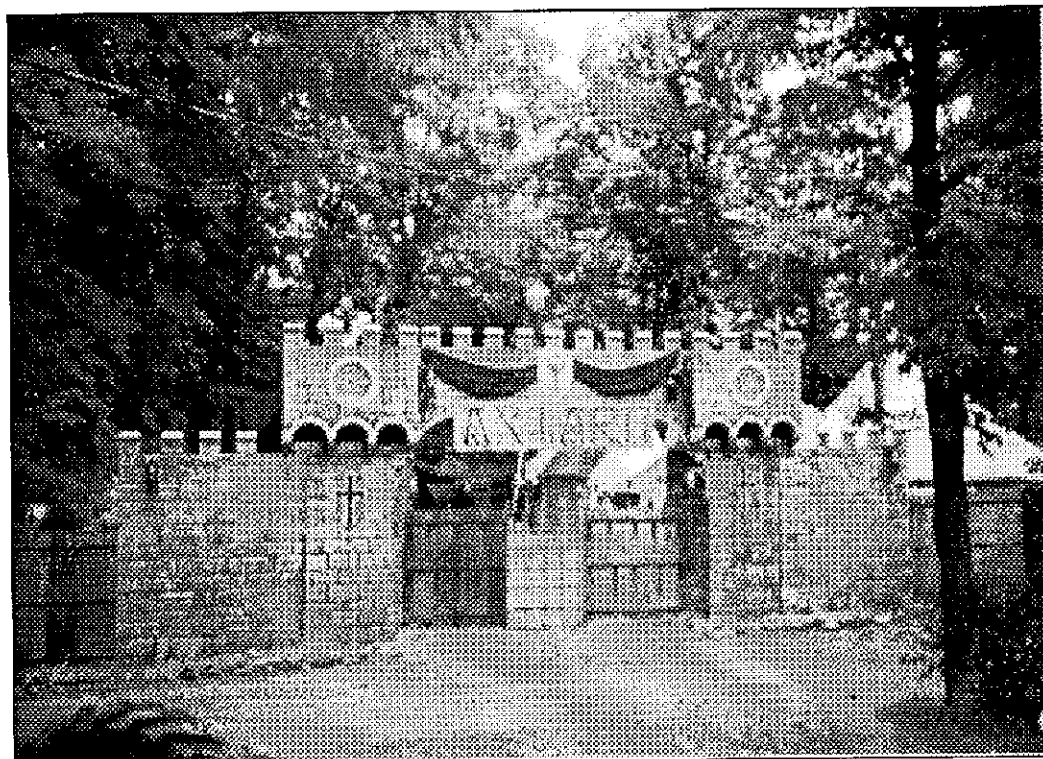
(Note: The gate above is the same one shown at left.)



Gate towers under construction.



Above: The tower frames have been used for several wars, but the original painted panels were lost after the first year.



At left: The latest installment (from last year's Pennsic. House Asgard purchased a "Camelot" set from a theatrical company and rebuilt it to serve as their household gate. They intend to erect it again at this year's Pennsic War.

My thanks to Duke Syr Baldar for supplying photographs for use in Sacred Spaces.